

6.0.3 Functional Diagrams Workhydraulic CM 1650

Option **Pressure Control** Front Tool Carrier **1459.31**

1. Function: Front tool carrier raised (FTC)
2. Function: Lower- Floating Position Front Tool Carrier (FTC); Y13 powered- on
3. Function: Unload Front Tool Carrier (FTC) 0-50bar Y12, Y33, Y36 powered- on
4. Function: Raise front tool carrier (FTC); Y12, Y14, Y35 powered-on

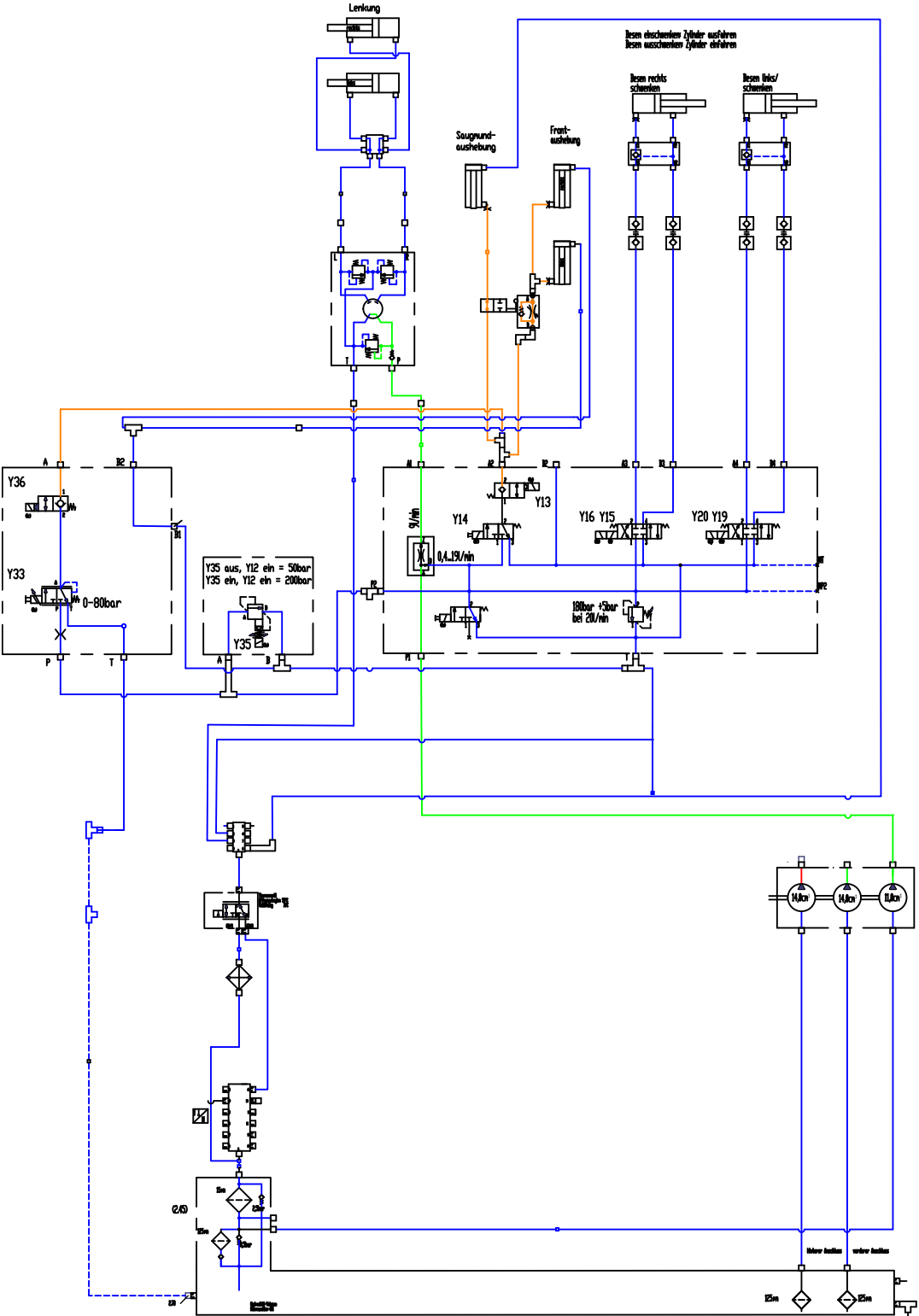
Hy.- Functional diagrams Workhydraulic CM 1650

Option Pressure Control
Front Tool Carrier 1459.31

1.Function: Front tool carrier raised

Hydraulic lines color markings

- Tank pressure
- Circulation pressure
- Working pressure
- Resulting pressure



Hy.- Functional diagrams Workhydraulic CM 1650

Option Pressure Control
Front Tool Carrier 1459.31

2.Function: Lower- floating position
front tool carrier (FTC),
Y13 powered- on

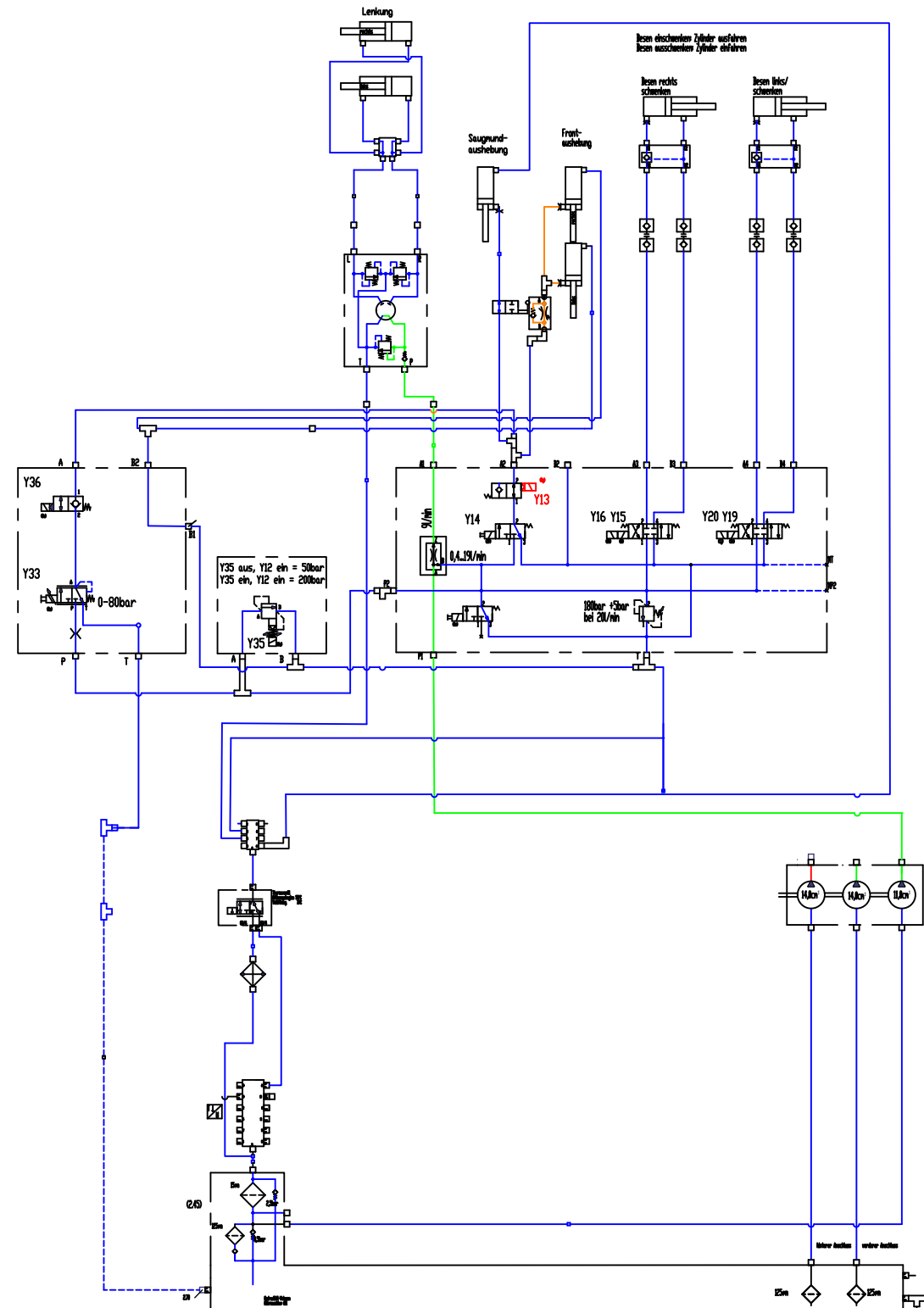
Hydraulic lines color markings

Tank pressure

Circulation pressure

Working pressure

Resulting pressure



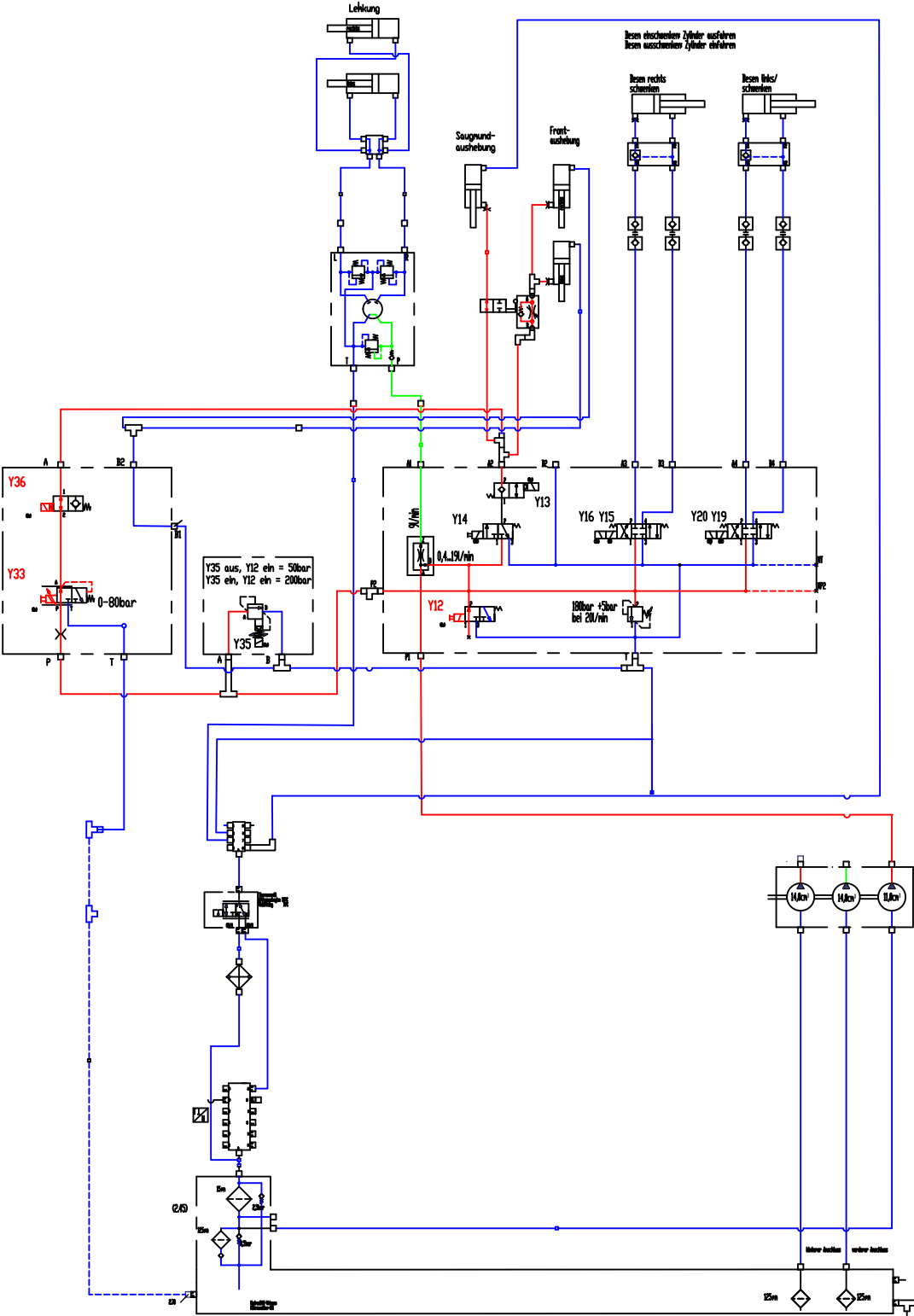
Hy.- Functional diagrams Workhydraulic CM 1650

Option Pressure Control
Front Tool Carrier 1459.31

3.Function: Unload Front Tool Carrier 0-50 bar
Y12, Y35, Y33, Y36 powered - on

Hydraulic lines color markings

- Tank pressure
- Circulation pressure
- Working pressure
- Resulting pressure



Hy.- Functional diagrams Workhydraulic CM 1650

Option Pressure Control
Front Tool Carrier 1459.31

4. Function: Raise front tool carrier
Y12, Y14 and Y35 powered - on

Hydraulic lines color markings

- Tank pressure
- Circulation pressure
- Working pressure
- Resulting pressure

